

IMPROVEMENT TO TUNG CHUNG ROAD BETWEEN LUNG TSENG TAU AND CHEUNG SHA INVESTIGATION AND PRELIMINARY DESIGN ASSIGNMENT

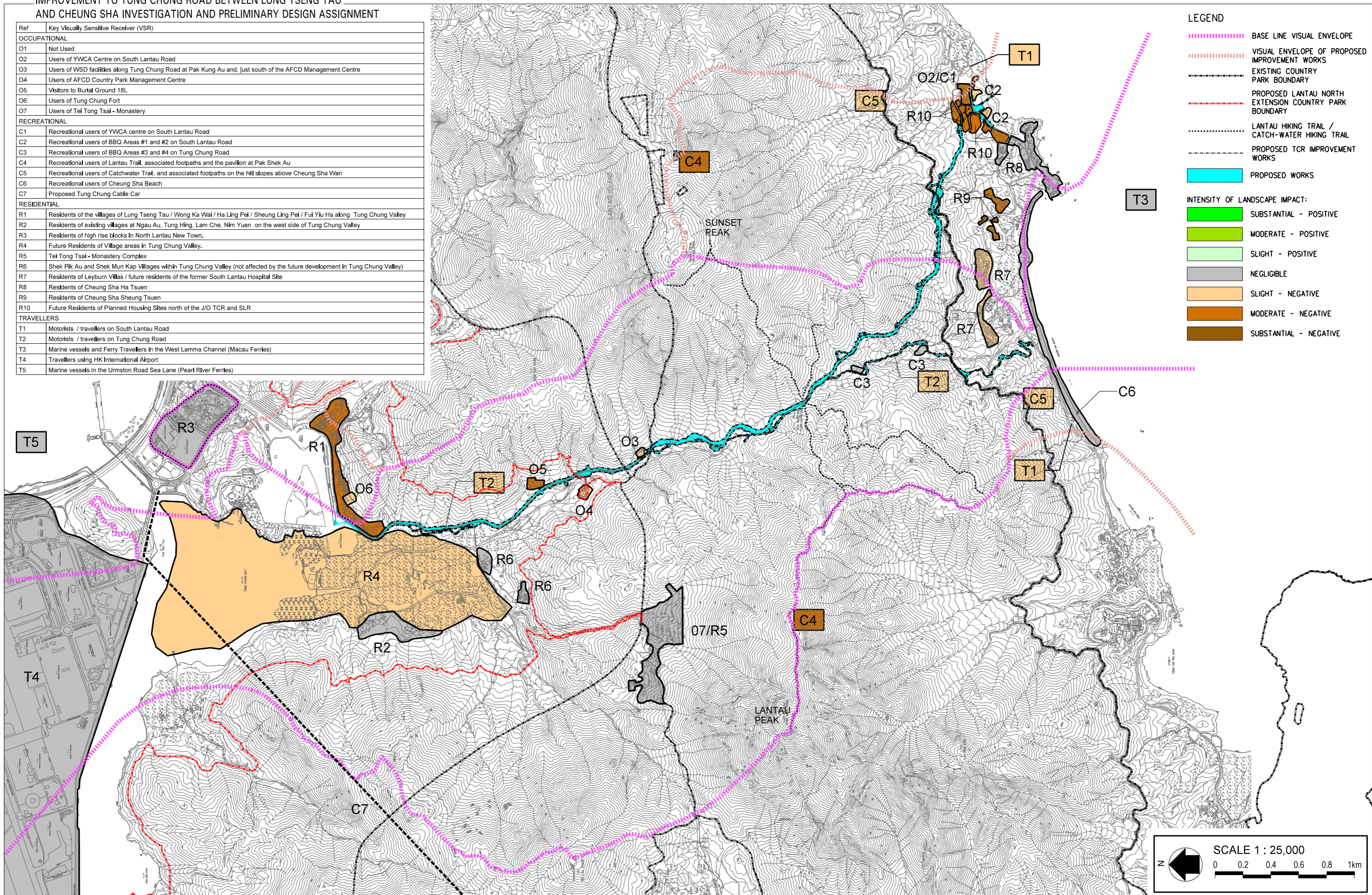
Ref	Key Visually Sensitive Receiver (VSR)
OCCUPATIONAL	
O1	Not Used
O2	Users of YWCA Centre on South Lantau Road
O3	Users of WSD facilities along Tung Chung Road at Pak Kung Au and, just south of the AFCD Management Centre
O4	Users of AFCD Country Park Management Centre
O5	Visitors to Burial Ground 18L
O6	Users of Tung Chung Fort
O7	Users of Tei Tong Tsai - Monastery
RECREATIONAL	
C1	Recreational users of YWCA centre on South Lantau Road
C2	Recreational users of BBQ Areas #1 and #2 on South Lantau Road
C3	Recreational users of BBQ Areas #3 and #4 on Tung Chung Road
C4	Recreational users of Lantau Trail, associated footpaths and the pavilion at Pak Shek Au
C5	Recreational users of Catchwater Trail, and associated footpaths on the hill slopes above Cheung Sha Wan
C6	Recreational users of Cheung Sha Beach
C7	Proposed Tung Chung Cable Car
RESIDENTIAL	
R1	Residents of the villages of Lung Tseng Tau / Wong Ka Wai / Ha Ling Pei / Sheung Ling Pei / Fui Yiu Ha along Tung Chung Valley
R2	Residents of existing villages at Ngau Au, Tung Hing, Lam Che, Nim Yuen on the west side of Tung Chung Valley
R3	Residents of high rise blocks in North Lantau New Town.
R4	Future Residents of Village areas in Tung Chung Valley.
R5	Tei Tong Tsai - Monastery Complex
R6	Shek Pik Au and Shek Mun Kap Villages within Tung Chung Valley (not affected by the future development in Tung Chung Valley)
R7	Residents of Leyburn Villas / future residents of the former South Lantau Hospital Site
R8	Residents of Cheung Sha Ha Tsuen
R9	Residents of Cheung Sha Sheung Tsuen
R10	Future Residents of Planned Housing Sites north of the J/O TCR and SLR
TRAVELLERS	
T1	Motorists / travellers on South Lantau Road
T2	Motorists / travellers on Tung Chung Road
T3	Marine vessels and Ferry Travellers in the West Lamma Channel (Macau Ferries)
T4	Travellers using HK International Airport
T5	Marine vessels in the Urmston Road Sea Lane (Pearl River Ferries)

LEGEND

- BASE LINE VISUAL ENVELOPE
- VISUAL ENVELOPE OF PROPOSED IMPROVEMENT WORKS
- EXISTING COUNTRY PARK BOUNDARY
- PROPOSED LANTAU NORTH EXTENSION COUNTRY PARK BOUNDARY
- LANTAU HIKING TRAIL / CATCH-WATER HIKING TRAIL
- PROPOSED TCR IMPROVEMENT WORKS
- PROPOSED WORKS

INTENSITY OF LANDSCAPE IMPACT:

- SUBSTANTIAL - POSITIVE
- MODERATE - POSITIVE
- SLIGHT - POSITIVE
- NEGLIGIBLE
- SLIGHT - NEGATIVE
- MODERATE - NEGATIVE
- SUBSTANTIAL - NEGATIVE



OPERATIONAL IMPACTS ON VISUALLY SENSITIVE RECEIVERS